

basic elements

Cable & Rod System Components



Creative display solutions

DISPLAY  DESIGN

basic elements

Cable System Components

Create stylish design detail quickly and easily with our versatile range of budget-priced mounting components.



BASIC 1.5MM CABLE KIT

Floor to ceiling kit with 1.5mm stainless steel cable (4m).

Code: 6000/HC

1.5MM HANGING KITS FOR UP TO 3MM, 6MM OR 10MM PANEL

Ceiling hanging kit with 1.5mm stainless steel cable (2m).

3MM - Code: 6003/HC
6MM - Code: 6004/HC
10MM - Code: 6013/HC



1.5MM WALL-MOUNT SHELF KIT

Wall-mounted kit with 1.5mm stainless steel cable (4m).

Code: 6444/HC

1.5MM CEILING, FLOOR, WALL MOUNTING KIT

Wall-mounted kit with 1.5mm stainless steel cable (4m).

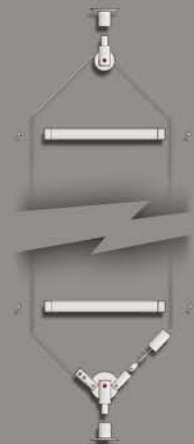
Code: 6055/HC



1.5MM CEILING TO FLOOR SHELVING CABLE KIT

Ceiling and floor mount kit with 1.5mm stainless steel cable (8m).

Code: 6555/HC



1.5mm Cable Components

TOP UNIVERSAL CABLE GRIP

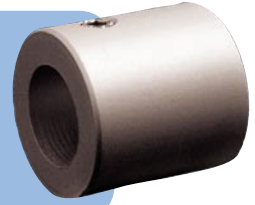
Suitable for 1.5mm cable.

Code: 6512/1/HC
Size: 10mm Ø, 13.5mm L



TOP BOSS

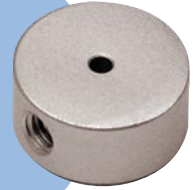
Code: 6000/3/HC
Size: 19mm Ø, 19mm L



SHELF SUPPORT / CEILING SHIELD

For 1.5mm cable.

Code: 6514/HC
Size: 19mm Ø, 8mm H



SLIMLINE SIDE GRIP

Suitable for up to 3mm panel thickness.

Code: 1011/HC
Size: 9mm Ø, 17mm L



SLIMLINE TWIN SIDE GRIP

Suitable for up to 3mm panel thickness.

Code: 1012/HC
Size: 9mm Ø, 26mm L



SLIMLINE SIDE GRIP

Suitable for up to 4mm panel thickness.

Code: 6011/HC
Size: 12.5mm Ø, 23mm L



SLIMLINE TWIN SIDE GRIP

Suitable for up to 4mm panel thickness.

Code: 6012/HC
Size: 12.5mm Ø, 37mm L



SIDE GRIP

Suitable for up to 3mm panel thickness.

Code: 6006/HC
Size: 16.5mm Ø, 23mm L



SIDE GRIP

Suitable for up to 6mm panel thickness.

Code: 6066/HC
Size: 16.5mm Ø, 23mm L

**SIDE GRIP**

Suitable for up to 8mm panel thickness.

Code: 6086/HC
Size: 16.5mm Ø, 23mm L

**SIDE GRIP**

Suitable for up to 10mm panel thickness.

Code: 6186/HC
Size: 18.5mm Ø, 23mm L

**TWIN SIDE GRIP**

Suitable for up to 3mm panel thickness.

Code: 6008/HC
Size: 16.5mm Ø, 37mm L

**TWIN SIDE GRIP**

Suitable for up to 6mm panel thickness.

Code: 6068/HC
Size: 16.5mm Ø, 37mm L

**TWIN SIDE GRIP**

Suitable for up to 8-10mm panel thickness.

Code: 6078/HC
Size: 18.5mm Ø, 37mm L

**SHELF GRIP**

Suitable for up to 6mm shelf thickness.

Code: 6010/HC
Size: 16.5mm Ø, 23mm L

**SHELF GRIP**

Suitable for up to 8mm shelf thickness.

Code: 6080/HC
Size: 16.5mm Ø, 23mm L

**SHELF GRIP**

Suitable for up to 10mm shelf thickness.

Code: 6180/HC
Size: 18.5mm Ø, 23mm L

**TWIN SHELF GRIP**

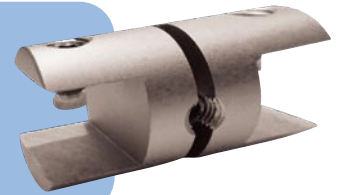
Suitable for up to 6mm shelf thickness.

Code: 6026/HC
Size: 16.5mm Ø, 37mm L

**TWIN SHELF GRIP**

Suitable for up to 10mm shelf thickness.

Code: 6027/HC
Size: 16.5mm Ø, 37mm L

**SHELF SUPPORT**

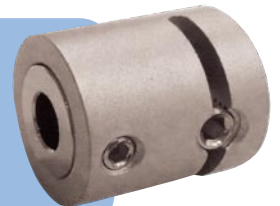
Code: 6007/HC
Size: 16.5mm Ø, 15.5mm L

**CABLE FRAME SUPPORT**

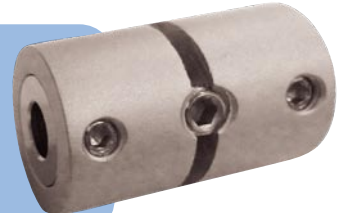
Code: 6016/HC
Size: 16.5mm Ø, 19mm L

**SINGLE PANEL / FRAME CONNECTOR**

Code: 6062/HC
Size: 18.5mm Ø, 20mm L

**DOUBLE PANEL / FRAME CONNECTOR**

Code: 6060/HC
Size: 18.5mm Ø, 28mm L

**THROUGH HOLE PANEL SUPPORT**

Suitable for 3mm to 10mm panel thickness. Requires 12mm Ø holes.

Code: 6087/HC
Size: 15mm Ø, 23mm + 5mm L



SWIVEL SIDE GRIP

Suitable for panel up to 6mm.

Code: 6018/HC

Size: 19mm Ø, 29mm L



TWIN SWIVEL SIDE GRIP

Suitable for panel up to 6mm.

Code: 6019/HC

Size: 19mm Ø, 47mm L



SIDE GRIP

Suitable for up to 6mm panel thickness.

Code: 6366/HC

Size: 16.5mm Ø, 26.5mm L

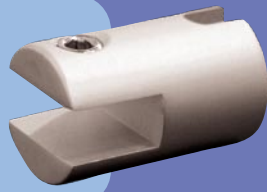


SHELF GRIP

Suitable for up to 6mm shelf thickness.

Code: 6310/HC

Size: 16.5mm Ø, 26.5mm L

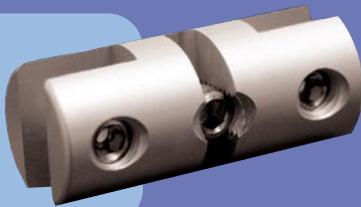


TWIN SIDE GRIP

Suitable for up to 6mm panel thickness.

Code: 6368/HC

Size: 16.5mm Ø, 39mm L



SHELF SUPPORT / CEILING SHIELD

For 3mm cable.

Code: 6515/HC

Size: 19mm Ø, 8mm H



CEILING & FLOOR TRACK

Anodised aluminium. Suitable for use with 6000/HC and 4000/HC kits.

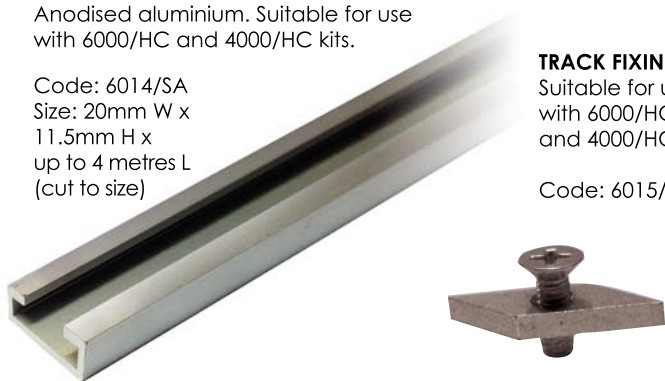
Code: 6014/SA

Size: 20mm W x 11.5mm H x up to 4 metres L (cut to size)

TRACK FIXING

Suitable for use with 6000/HC and 4000/HC kits.

Code: 6015/D



3mm Cable Components

1.5mm Cable + 6mm Rod

Rod System Components

6mm + 10mm Rod kits

ROD KIT FOR FIXING BETWEEN FLOOR & CEILING

Includes 4 M4, 2 M4 x 2.6mm screws, tensioner spring and grip.

NB* KIT EXCLUDES ROD

6mm kit:

Code: 4000/HC

10mm kit:

Code: 3000/SA



STAINLESS STEEL ROD

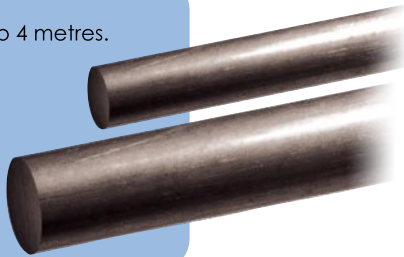
Available in lengths of up to 4 metres.

6mm:

Code: 4500/SS

10mm:

Code: 3500/SS



THREADING CHARGE

Required 1 end only to enable installation.

6mm:

Code: THREADING6MM

10mm:

Code: THREADING

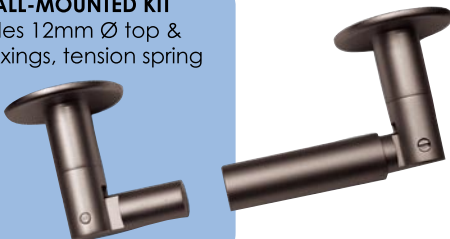


CEILING, FLOOR OR WALL-MOUNTED KIT

For 6mm rod. Kit includes 12mm Ø top & 16mm Ø lower swivel fixings, tension spring & screws.

NB* KIT EXCLUDES ROD

Code: 4005/HC

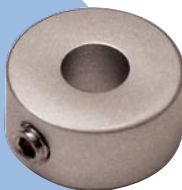


SHELF SUPPORT / CEILING SHIELD

For 6mm rod.

Code: 6516/HC

Size: 19mm Ø, 8mm H



WALL-MOUNT ROD HOLDER

For 6mm rod.

Code: 4522/HC

Size: 18.5mm Ø, 35mm L



SIDE GRIP

Suitable for up to 6mm panel thickness.

Code: 4066/HC

Size: 16.5mm Ø, 30mm L



SIDE GRIP SUPPORT

Suitable for up to 10mm panel thickness.

Code: 4076/HC

Size: 18.5mm Ø, 30mm L

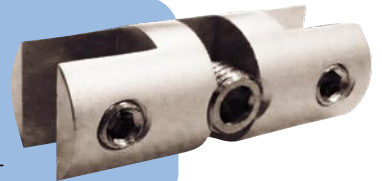


TWIN SIDE GRIP

Suitable for 6mm-8mm panel thickness.

Code: 4068/HC

Size: 16.5mm Ø, 42mm L



TWIN SIDE GRIP

Suitable for 10mm panel thickness.

Code: 4070/HC

Size: 18.5mm Ø, 42mm L



SHELF GRIP

Suitable for 6mm-8mm shelf thickness.

Code: 4010/HC

Size: 16.5mm Ø, 30mm L



TWIN SHELF GRIP

Suitable for 6mm-8mm shelf thickness.

Code: 4022/HC

Size: 18.5mm Ø, 42mm L



SHELF GRIP

Suitable for up to 10mm shelf thickness.

Code: 4013/HC

Size: 18.5mm Ø, 29mm L

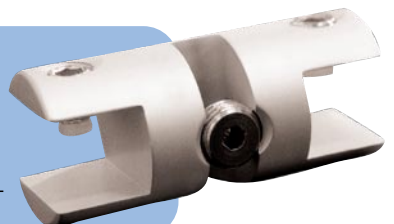


TWIN SHELF GRIP

Suitable for up to 10mm shelf thickness.

Code: 4014/HC

Size: 18.5mm Ø, 42mm L



6mm Rod Components

basic elements

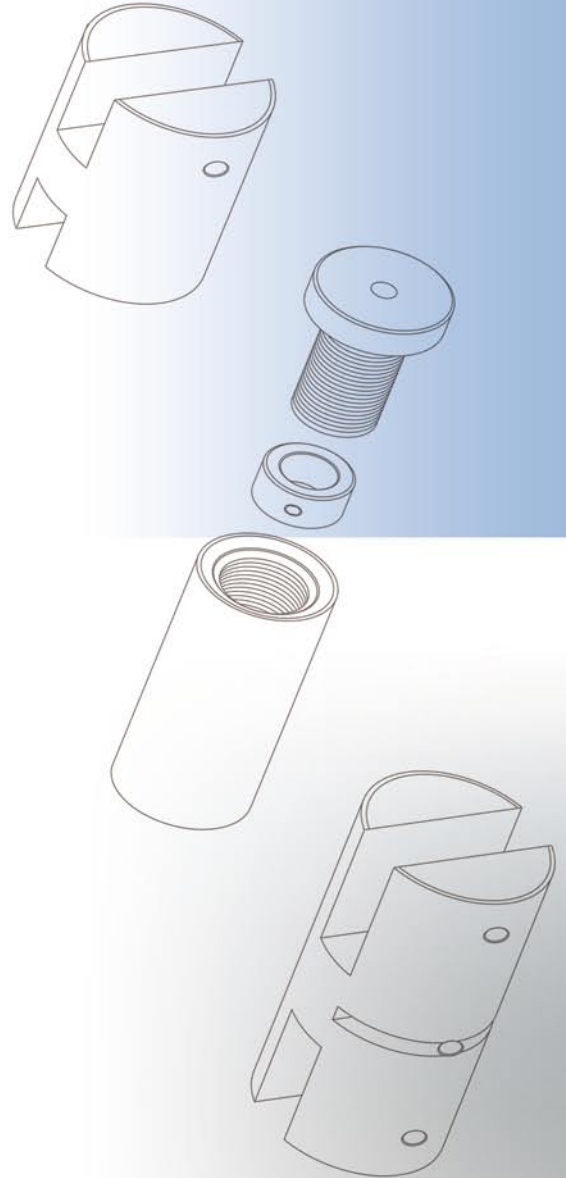
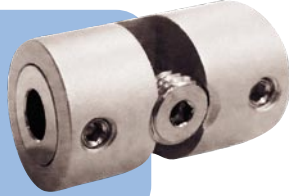
SINGLE PANEL / FRAME CONNECTOR

Code: 4060/HC
Size: 18.5mm Ø, 20mm L



DOUBLE PANEL / FRAME CONNECTOR

Code: 4061/HC
Size: 18.5mm Ø, 28mm L



SIDE GRIP

Suitable for up to 6mm panel thickness.

Code: 3166/HC
Size: 16.5mm Ø, 34mm L



SHELF GRIP

Suitable for up to 6mm shelf thickness.

Code: 3110/HC
Size: 18.5mm Ø, 34mm L



SHELF SUPPORT / CEILING SHIELD

For 10mm rod.

Code: 6513/HC
Size: 19mm Ø, 8mm H



WALL-MOUNT ROD HOLDER

For 10mm rod.

Code: 4523/HC
Size: 18.5mm Ø, 40mm L



GLASS SUPPORT

For 10mm rod.

Code: E4049
Size: 18.5mm/30mm Ø, 24mm H



10mm Rod Components