

i-pucTM

Merchandising & Display System



Creative Display Solutions

DISPLAY  DESIGN

i-puc™

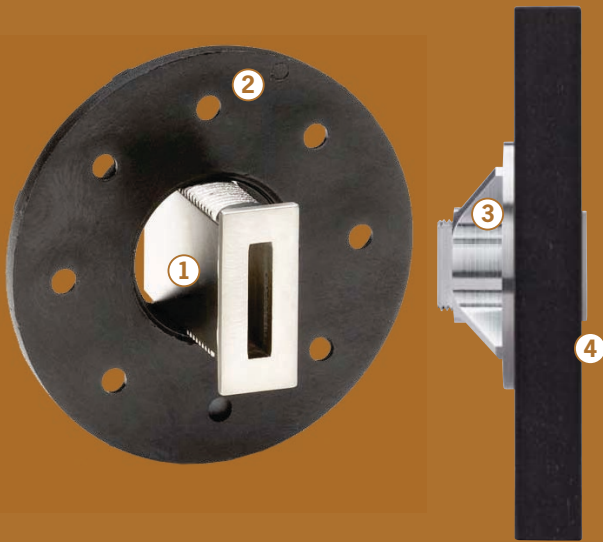
Merchandising & Display System

Discreet in appearance and amazingly versatile in application, this cleverly engineered display program provides a distinctive innovation in “puck” based merchandising systems.

Unobtrusive yet versatile in application

Engineered for strength and versatility, i-puc's discreet, vertical carrier sockets fit directly into timber, board, glass, acrylic or laminated materials and sit clean to the panel surface.

Suitable for use in panels from 10-28mm in thickness, i-puc carrier sockets can be placed at various heights or spacings along the surface to accommodate the required display application.



- 1 i-puc carrier socket, zinc diecast.
- 2 i-puc carrier socket lock nut.
Also available with clear lock nut for use with acrylic or glass panels
(*stock code IP 111 503 00).
- 3 i-puc carrier sockets fit from the front and can accommodate panel thicknesses of 10-28mm.
- 4 Once fitted to the panel i-puc carrier sockets fit clean to the panel surface creating a discreet outline.



Fully interchangeable hardware

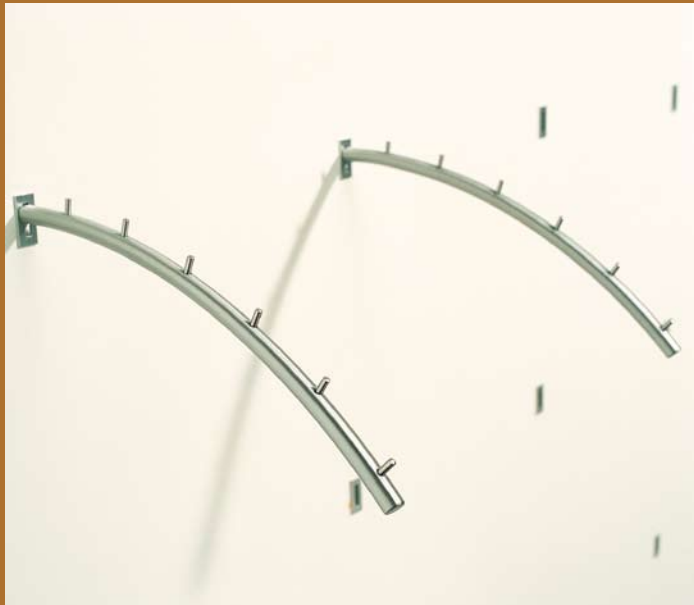
From shelving display application right through to front and side hang merchandising, i-puc offers a wide selection of quality and versatile, support hardware. Merchandise support accessories slot securely into the i-puc carrier socket and, can be easily added, removed or reconfigured as needed.

Unlimited design possibilities

Create your own design concept with i-puc.

Beginning with the carrier socket, you specify the quantity, placement and type of accessories required to suit your display application.

Panels can be manufactured in a range of colours, sizes and finishes and, if required, adopt vertical concealed stripping for added flexibility.





Hardware and Accessories

IP 111 500 00

i-puc carrier socket with lock nut



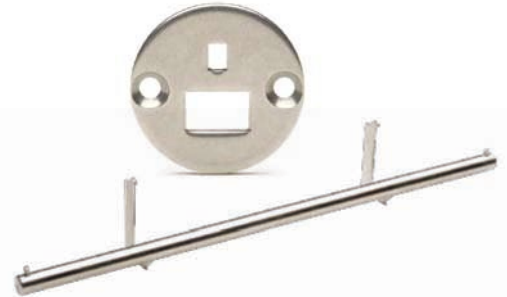
IP 111 503 00

i-puc carrier socket with clear lock nut

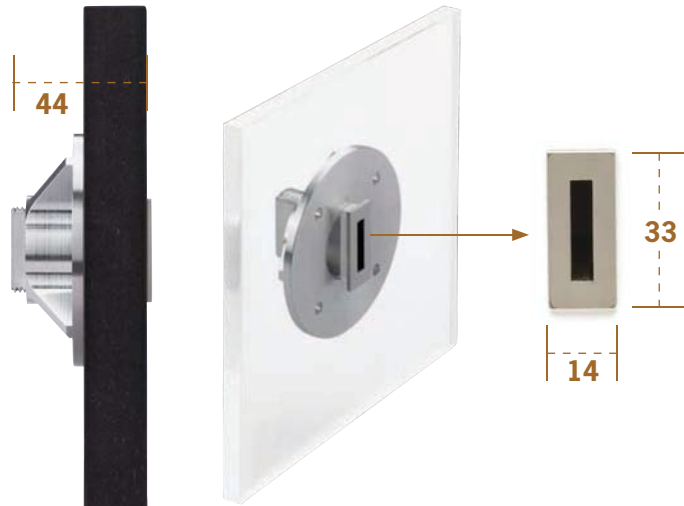


IP 270 600 30

Under shelf side, hanging rail 590mm, 20mm dia (includes 2 x shelf support plates)



I-PUC CARRIER SOCKET WITH LOCK NUT



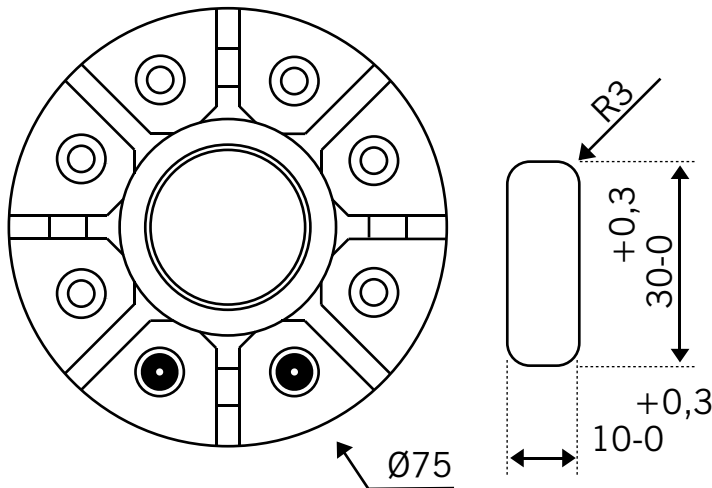
i-puc carrier sockets fit directly into the panel and sit clean to the front surface. Suitable for panel thicknesses of 10-28mm. Body 44mm long, flange 2mm thick.

WEIGHT CAPACITY



Tested to 25 Kg
Recommended maximum load per bracket = 15 Kg

MILLING INSTRUCTIONS FOR I-PUC CARRIER SOCKET (IP 111 500 00, IP 111 503 00)



i-puc carrier socket lock nut



Panel slot dimensions

ASSEMBLY NOTES:

IP 111 500 00 and IP 111 503 00 carrier sockets are suitable for installation into timber, board, glass, acrylic or laminated panels 10-28mm in thickness.

- 1 Place the i-puc carrier socket from the front through the machined panel slot.
(NB: Panel slot dimensions required for IP 111 500 00 and IP 111 503 00 carrier sockets as detailed left)
- 2 Screw the lock nut from the rear to the i-puc carrier socket body. Tighten the lock nut flush to the back of the panel.
- 3 Secure the lock nut with 2 screws at the rear of the panel.

Hardware and Accessories

<p>IP 251 501 05</p> <p>Shelf support - DECO for 6mm shelves</p> 	<p>ACRYLIC SHELF</p> <p>Made to specification. Pictured with IP 251 501 05 shelf support</p> 	<p>GLASS SHELF</p> <p>Made to specification. Pictured with IP 251 501 05 shelf supports. Also suitable for use with IP 210 215 16 shelf support arms</p> 	
<p>WENGE TIMBER SHELVES</p> <p>NVTS - 600mmL, 1000mmL, 1200mmL</p> 	<p>WHITE TIMBER SHELVES</p> <p>NVWS - 600mmL, 1000mmL, 1200mmL</p> 	<p>IP 210 215 16</p> <p>Shelf support arm 300mmL, 20mm Dia.</p> 	
<p>IP 470 120 30</p> <p>Internal shelf support 180mmL, 12mm Dia.</p> 	<p>IP 470 120 10</p> <p>Straight arm with pin 300mmL, 20mm Dia.</p> 	<p>DISPLAY PRONG 6MM DIA.</p> <p>IP 440 106 20 - 200mmL IP 440 106 15 - 150mmL</p> 	<p>DISPLAY ARM 10MM DIA.</p> <p>IP 461 110 15 - 150mmL IP 461 110 20 - 200mmL IP 461 110 30 - 300mmL</p> 
<p>IP 261 120 61</p> <p>Side hanging rail 590mmL, 20mm Dia.</p> 	<p>IP 432 112 28</p> <p>Curved arm with 8 pins</p> 	<p>IP 351 102 12</p> <p>Front presentation shoe shelf, 30° slanted front surface 120mm x 300mm</p> 	<p>IP 351 102 30</p> <p>Side presentation shoe shelf, 18° slanted side surface 120mm x 300mm</p> 

Technical Data

- Maximum capacity load for each bracket should not exceed 15kg.
- i-puc carrier sockets are diecast in zinc, nickel plated and anodised in a satin finish with PVC lock nuts.
- Merchandise support accessories are finished in satin chrome.
- 30 x 10mm panel slots required to fit i-puc carrier sockets. See milling instructions provided for additional detail.